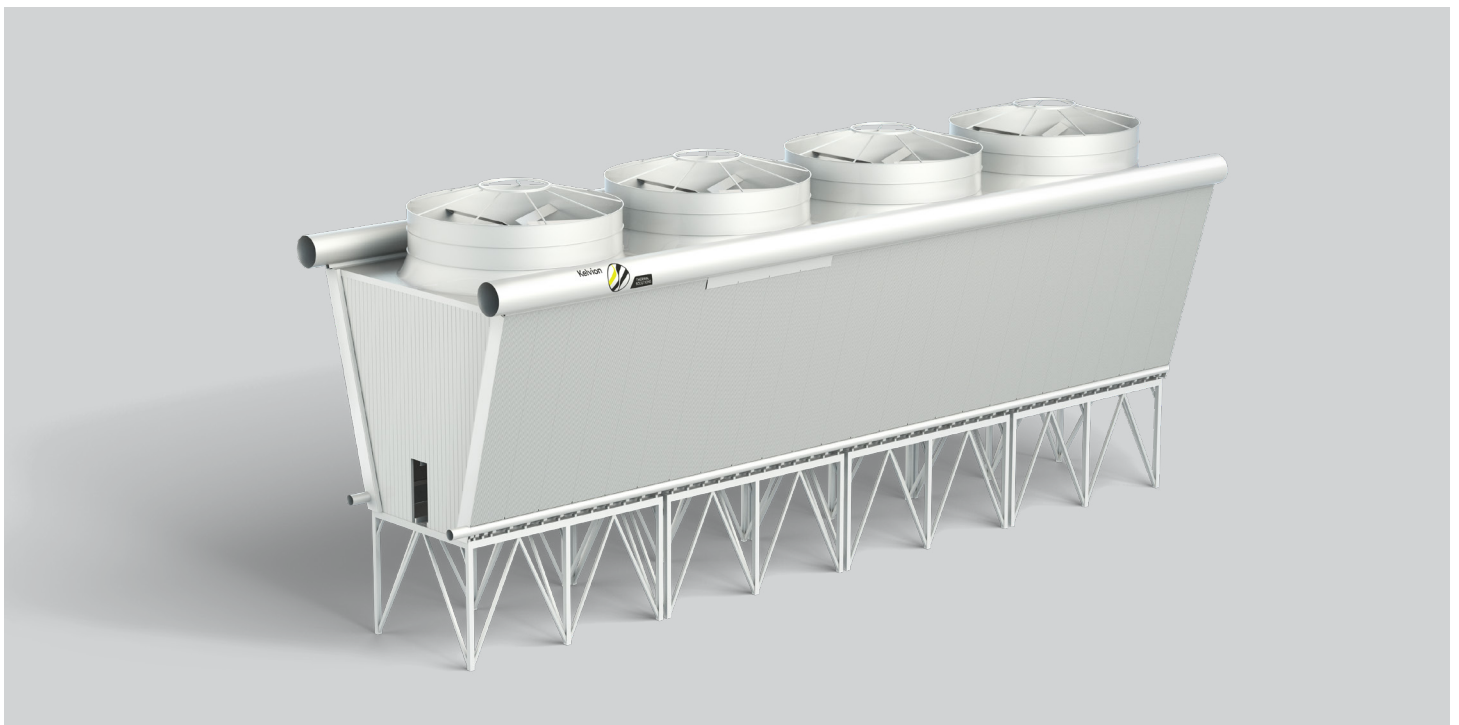


Kelvion ACX

STANDARDIZED AIR COOLED CONDENSER SOLUTION



DESIGN & FUNCTION

The ACX Air Cooled Condenser offers a standardized and modular design leading to short quotation and delivery times, a short payback period and lower CAPEX. The modular design allows for a high degree of preassembly of materials in the workshop and / or at grade level on site which leads to reduction of site erection hours. The ACX modules are designed to enable pre-assembly of individual modules and lifting into position of such completely pre-assembled modules, for example on the roof of the turbine building. Choose from three different fan diameters, 24 ft, 28 ft and 32 ft and combine up to four modules to an Air Cooled Condenser Bay to cover the range of heat flow rejected between approximately 15 MW up to approximately 90 MW. The optimized V-Shape installation with induced draft air fan on top allows for a lower substructure and therefore for a lower overall height as well as reduced power consumption compared with classical A-frame configurations. The mechanical drive (motor + gearbox) is located at the lower platform to ease access and maintenance during operations.

BENEFITS

- ▶ **MODULAR & COMPACT DESIGN**
- ▶ **FAST QUOTATION & DELIVERY**
- ▶ **UP TO 20% LESS POWER CONSUMPTION**
- ▶ **30% LESS STRUCTURAL STEEL**
- ▶ **20% LESS ERECTION WORK**

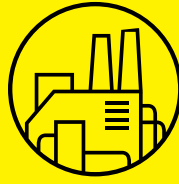
Apply ACX in



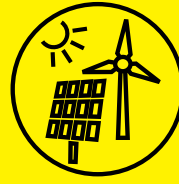
WASTE TO ENERGY



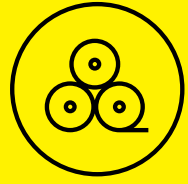
BIOMASS



INDUSTRY

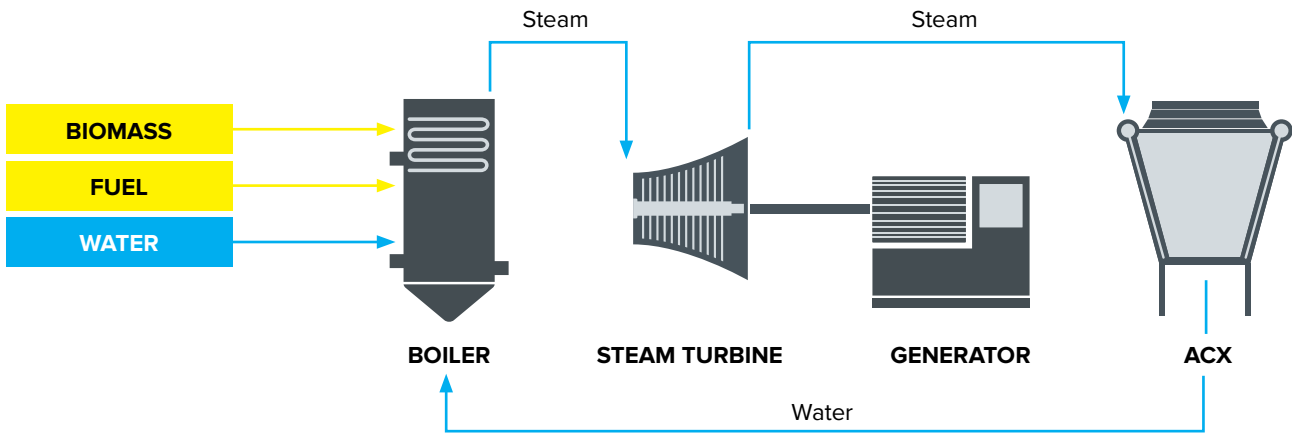


RENEWABLES

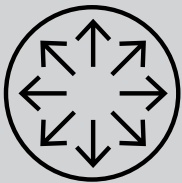


PULP & PAPER

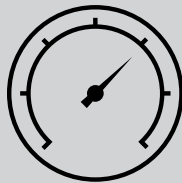
ACX in process



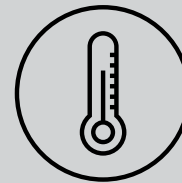
Performance data



Capacity approx.
15 to 90 MW
heat rejected

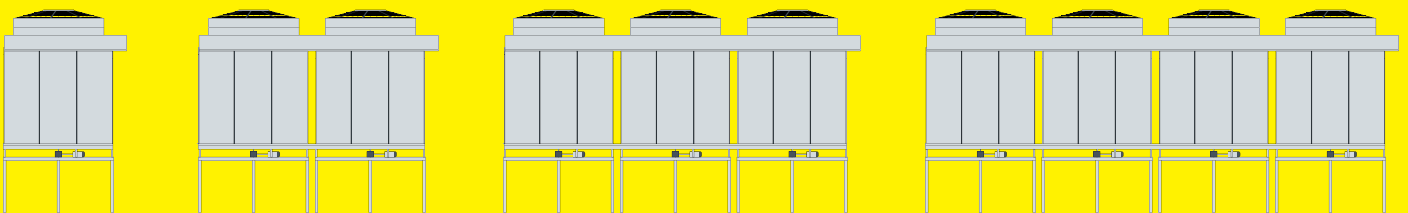


full vacuum up to
0,5 barg or 15 psig

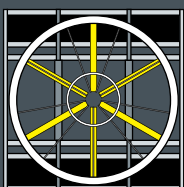


120 °C - 150 °C

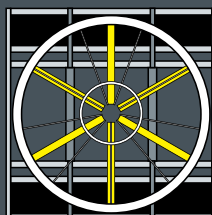
Combine up to four modules



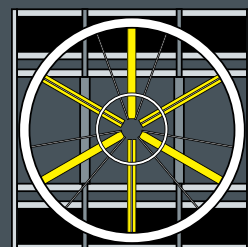
Choose from three different fan diameters



24 ft



28 ft



32 ft