

Kelvion AFX Alu

STANDARDIZED AIR FIN COOLER SOLUTION



DESIGN & FUNCTION

The AFX Alu offers nothing new but a standardized and modular design leading to short quotation and delivery times, a short payback period and lower CAPEX.

Reliable Components proven in year long operation all over the world form the architecture of AFX Alu by bringing customized technologies to a standard product. Its' robust design meets the requirements of the international standard API 661. Choose from three different frame heights, low, medium and high cases to meet various environmental conditions and up to 25 fan modules for your cooling.

Groovy fins feature a patented shape which maximises the heat exchange surface. This geometry allows an improvement in heat exchange of 8% to 15% for the same power consumption while providing optimal fouling resistance and cleaning capability.

BENEFITS

- ▶ **API 661 STANDARD**
- ▶ **PRESSURE VESSEL DESIGN ACCORDING ASME VIII DIV. 1 WITH U-STAMP /CE**
- ▶ **MODULAR & COMPACT DESIGN**
- ▶ **FAST QUOTATION & DELIVERY**
- ▶ **TRANSPORTABLE BY TRUCK / CONTAINER**
- ▶ **LOW NOISE**

MARKETS



POWER

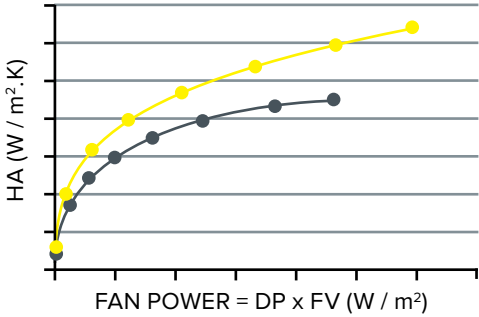


OIL & GAS

APPLICATIONS

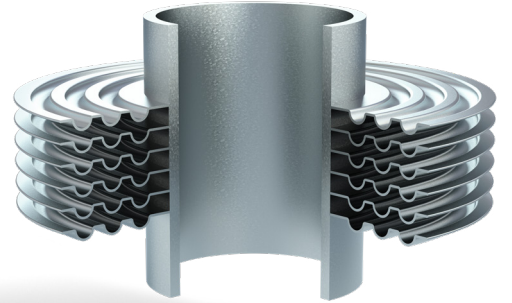
- ▶ TURBINE COOLING
- ▶ COMPRESSOR COOLING
- ▶ ...

GROOVY FINS



- GROOVY EMBEDDED FINS
- STANDARD EMBEDDED FINS

1" tube diameter
2 1/2" tube pitch
10 FPI fin density



DESIGN

COMBINE 1 TO 25 MODULES

1 fan module
2.74m / 9 ft. fan



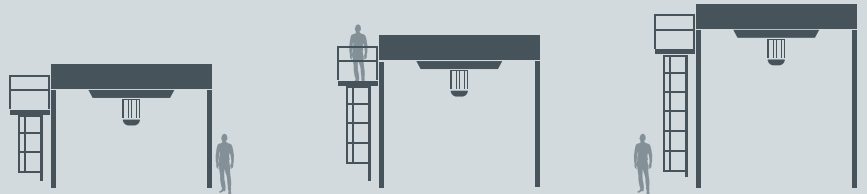
5 bays with 5 fan modules in line and over 18.3 m / 60 ft. tube length

SELECTED HEIGHTS ACC. TO API 661 AIR ENTRIES

3.1 m / 10.17 ft. height

4.1 m / 13.45 ft. height

5.1 m / 16.73 ft. height



DESIGN DATA

DESIGN TEMPERATURE

- ▶ UP TO 130 °C
- ▶ UP TO 266 °F



DESIGN PRESSURE

- ▶ UP TO 16 BAR G
- ▶ UP TO 232 PSI



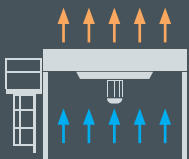
MEDIA

- ▶ WATER
- ▶ WATER / GLYCOL
- ▶ LUBE OIL

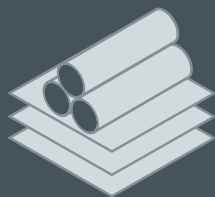
Transportation by truck with dismantled motors and steel structure possible.



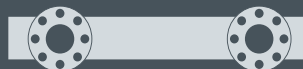
FURTHER FEATURES



FAN DRAFT:
Forced



HEADERS & TUBE MATERIAL:
Carbon steel
Stainless steel



HEADER TYPE:
Plug Header with standard design



INLET & OUTLET NOZZLES:
2 x 6" Sch 80
(allowable loads 2 x API 661)